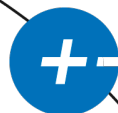


FLAT-PAR 3 HEXA



RGBWA
+UV



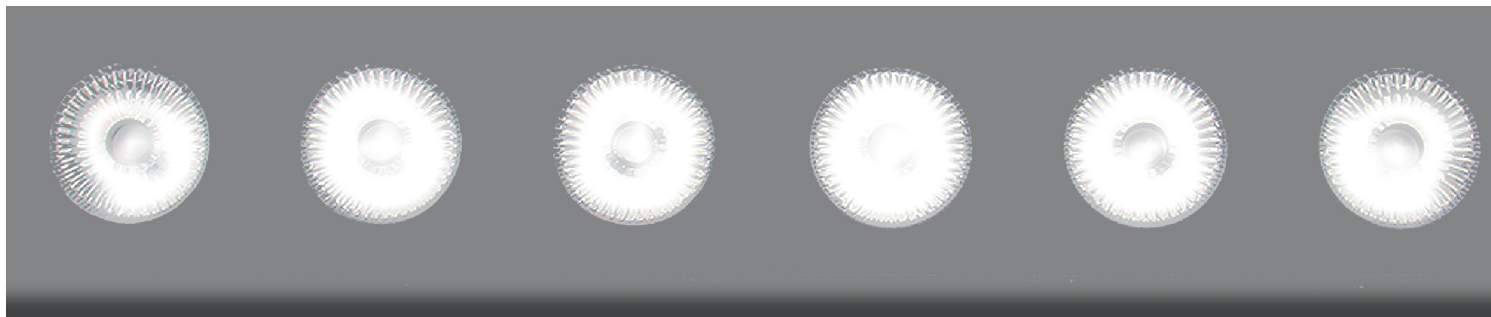
20° BEAM
ANGLE



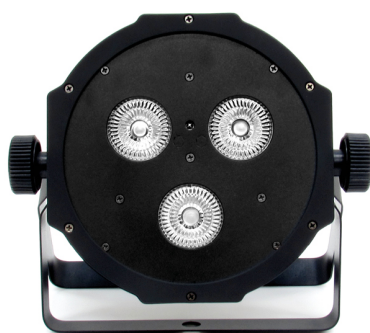
DMX + IR
CONTROL



WWW.LIGHT-INC.NL



FLAT-PAR 3 HEXA



The entry level model of the Light-Inc HEXA line. The FLAT-PAR 3 HEXA is a compact, yet fully equipped LED par. It has three 12 Watt 6-in-1 LED modules (Red, Green, Blue, White, Amber, Ultra Violet), which are made for endless color mixing possibilities by DMX or by the included remote control. Its beam angle is 20 degrees and is competitively priced to top it all off.

SPECIFICATIONS

- Light Source: 3pcs, 12W 6-in-1 LED, RGBWA+UV
- Beam Angle: 20°
- Life Time: 40.000-50.000 hours
- Dimming 0-100% with regulated constant color control
- Strobe: 10 Flashes per second
- Operation Mode: DMX 512, Manual, Sound, Internal program, IR control
- DMX control: 6, 9 DMX channels
- Control panel: Digital 4 characters alphanumeric
- Input Voltage: AC100-240V, 50-60Hz (switching power supply)
- Max Power: 40W
- Maximum Ambient Temperature: 40°C
- Weight: 1.1 kg



WWW.LIGHT-INC.NL